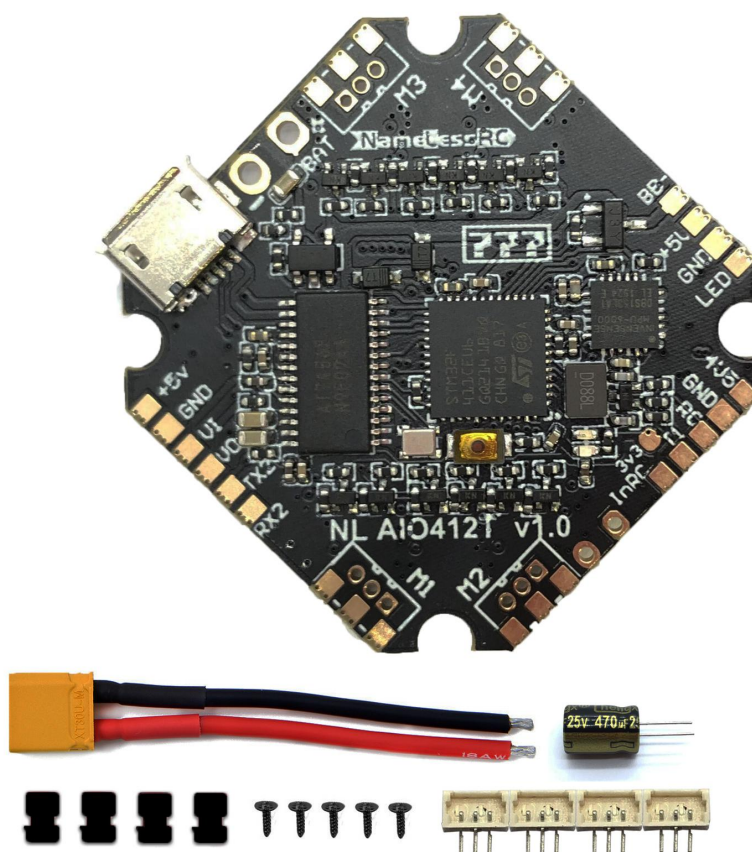


NLRC AIO412T (FC+ESC AIO)

User Manual V1.0



Brand name: NameLessRC

Item name: NameLessRC AIO412T (FC+ESC AIO)

Processor: STM32F411

Sensor: MPU-6000

Input Voltage: 2-4S Lipo or 2- 4S HV Lipo

Size: 33×33mm (mounting hole 26.5mm)

Weight: 4.7g (W/O battery wire)

Features:

- Capacitance & Buzzer pad built-in
- Support connect with motors via connectors or solder directly
- Compatible with more types frames
- The largest support 4S Lipo HV battery, with Current meter
- F411 Flight Controller, BEC 5V 2.5A
- MPU6000 Gyro
- Invert and non-invert SBUS port

FC SPECIFICATIONS :

- Built-in 5V 2.5A BEC with LC filter
- OSD: Built-in BetaFlight OSD
- Receiver: Support DSM2/X receiver, Frsky XM/XM+ Receiver, Frsky R9M -Futaba Receiver, Flysky Receiver, TBS Crossfire Receiver
- Support programmable LED
- Built-in current sensor

ESC SPECIFICATIONS :

Power supply: 2-4S LiPo/LiPo HV (7.4v/17.4v)

Continue current: 12A

Peak current: 15A

Firmware: BLHELI_S

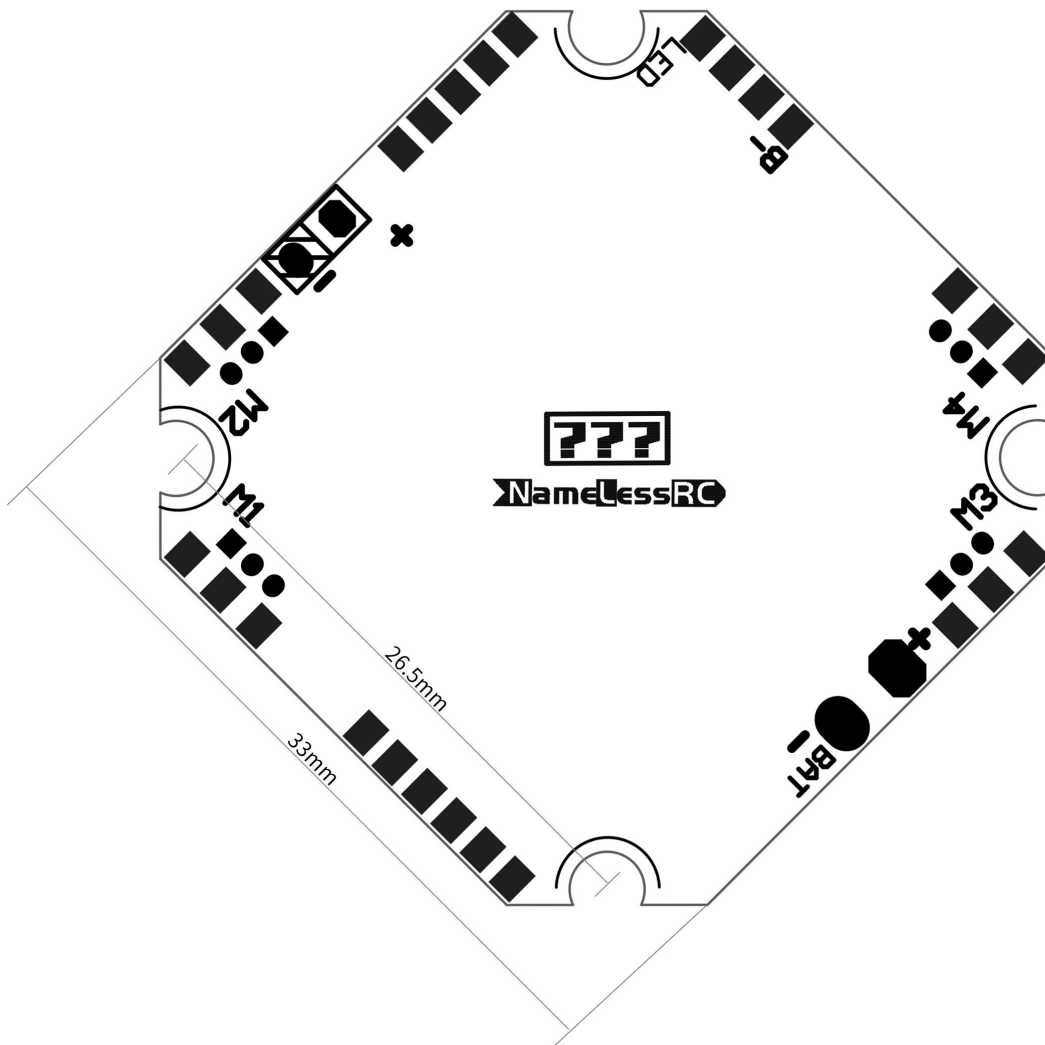
Motor Connectors: 1.25mm header pins connector

Default protocol: DShot600

Up Side



Bottom Side^①



*^① All solder pads on the side are on the both side of the PCB board.

Power & Battery

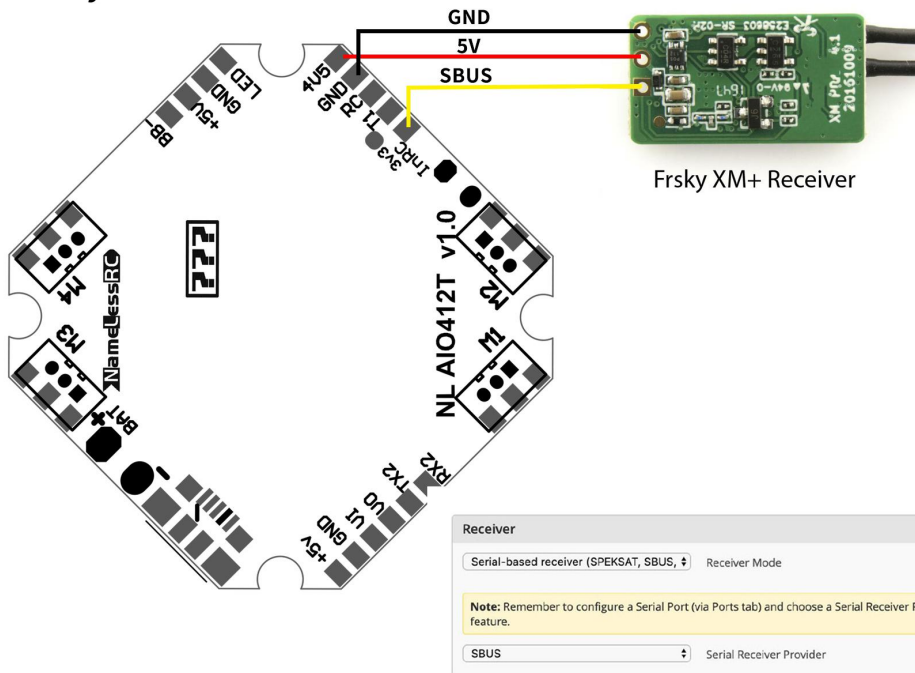
Battery			
Onboard ADC	▼	Voltage Meter Source	
Onboard ADC	▼	Current Meter Source	
3.3	↕	Minimum Cell Voltage	
4.3	↕	Maximum Cell Voltage	
3.5	↕	Warning Cell Voltage	
300	↕	Capacity (mAh)	

Voltage Meter			
Battery	0 V	110	↕ Scale
		10	↕ Divider Value
		1	↕ Multiplier Value

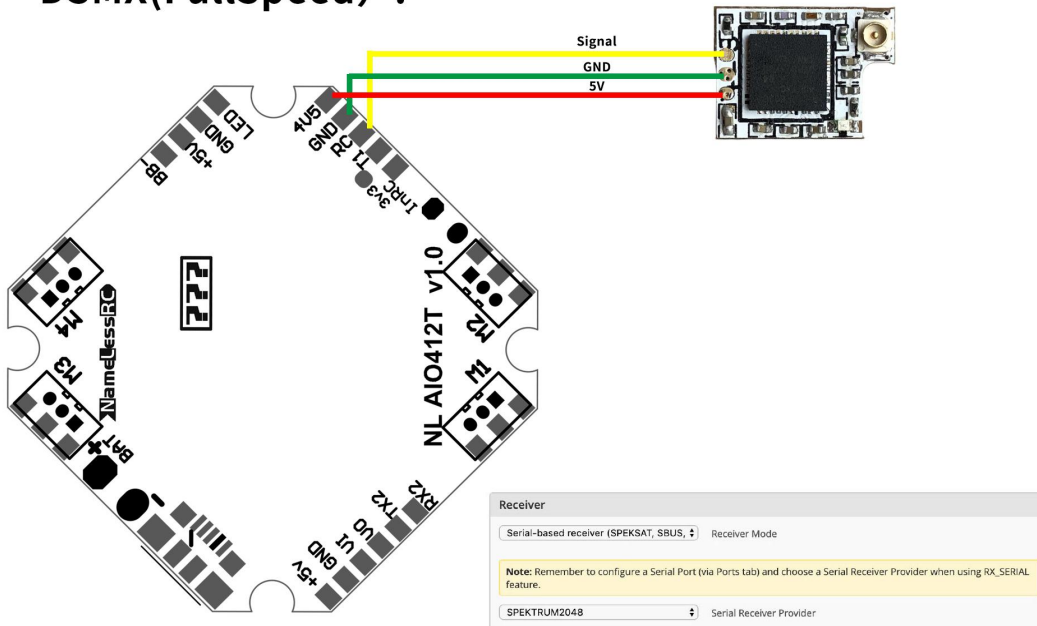
Amperage Meter			
Battery	0.00 A	750	↕ Scale [1/10th mV/A]
		0	↕ Offset [mA]

To connect the receiver

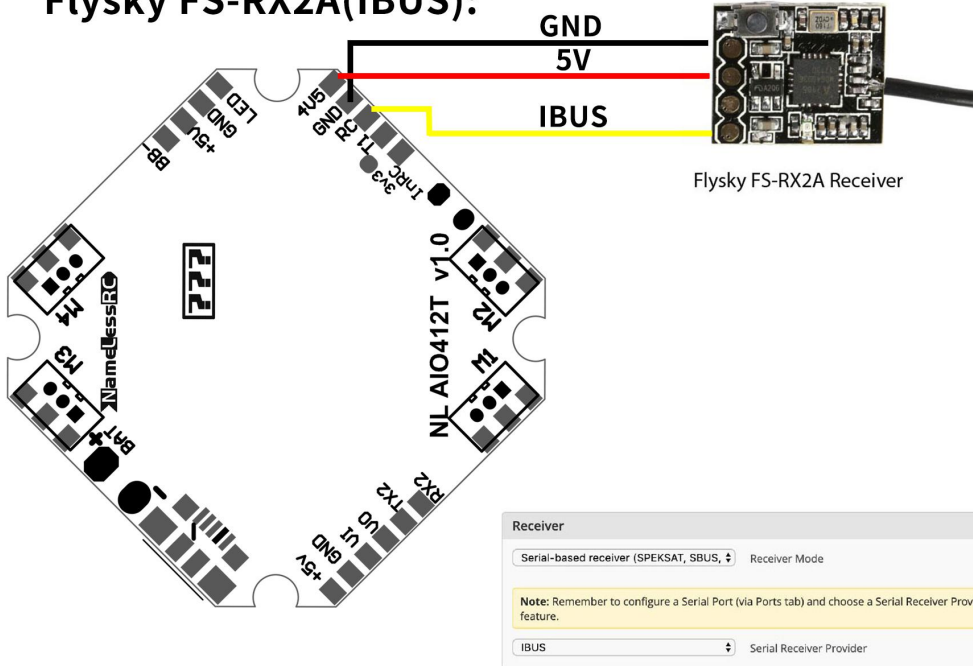
FrSky XM+ receiver:



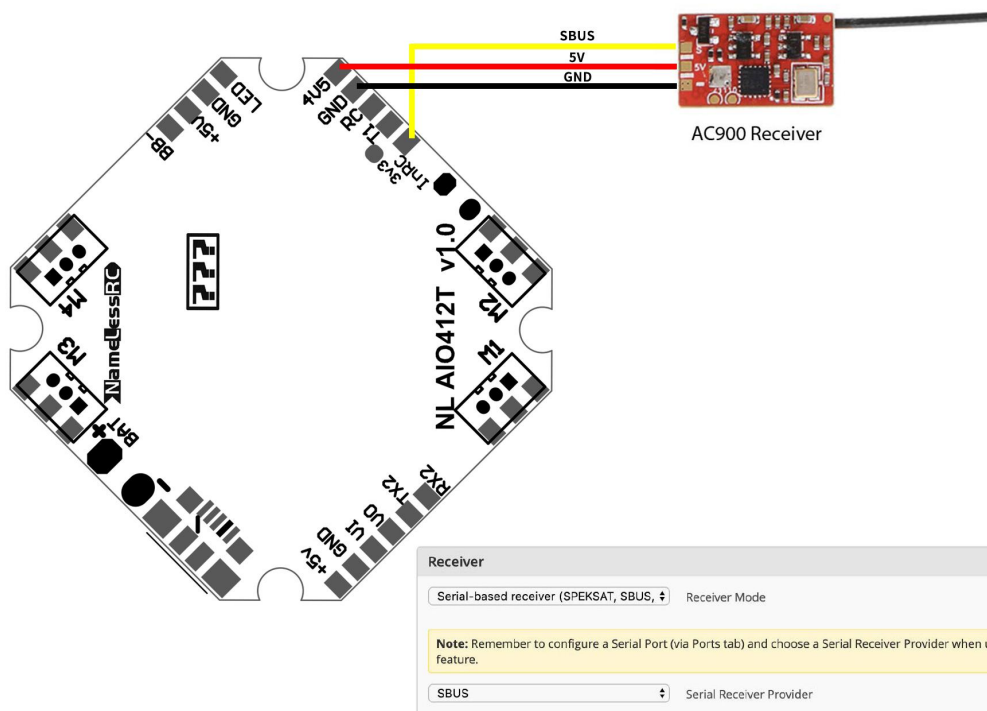
DSMX(FullSpeed) :



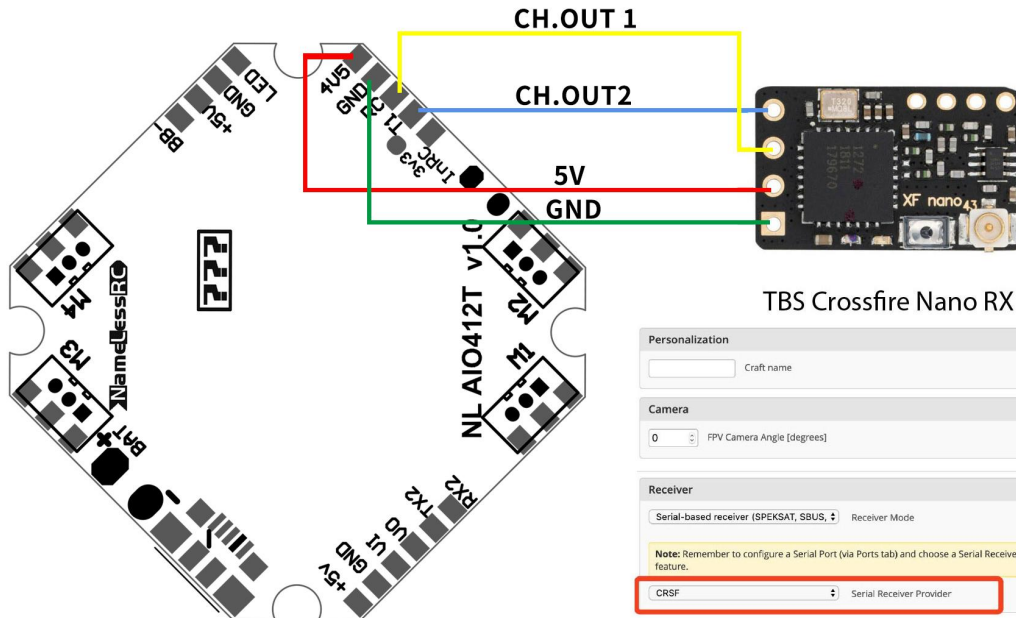
Flysky FS-RX2A(IBUS):



AC900(Support FrSky D16 && FUTABA S-FHSS)



TBS Crossfire Nano RX:



Personalization

Craft name

Camera

0 FPV Camera Angle [degrees]

Receiver

Serial-based receiver (SPEKSAT, SBUS,) Receiver Mode

Note: Remember to configure a Serial Port (via Ports tab) and choose a Serial Receiver Provider when using RX_SERIAL feature.

CRSF Serial Receiver Provider

Other Features

Note: Not all features are supported by all flight controllers. If you enable a specific feature, and it is disabled after you hit 'Save and Reboot', it means that this feature is not supported on your board.

<input type="checkbox"/>	INFLIGHT_ACC_CAL	In-flight level calibration
<input type="checkbox"/>	SERVO_TILT	Servo gimbal
<input checked="" type="checkbox"/>	SOFTSERIAL	Enable CPU based serial ports
<input type="checkbox"/>	SONAR	Sonar
<input checked="" type="checkbox"/>	TELEMETRY	Telemetry output
<input checked="" type="checkbox"/>	LED_STRIP	Multi-color RGB LED strip support
<input type="checkbox"/>	DISPLAY	OLED Screen Display
<input type="checkbox"/>	CHANNEL_FORWARDING	Forward aux channels to servo outputs
<input type="checkbox"/>	TRANSPONDER	Race Transponder